

17 Islestone Court

Berwick upon Tweed, TD15 2DT

Offers Over £185,000

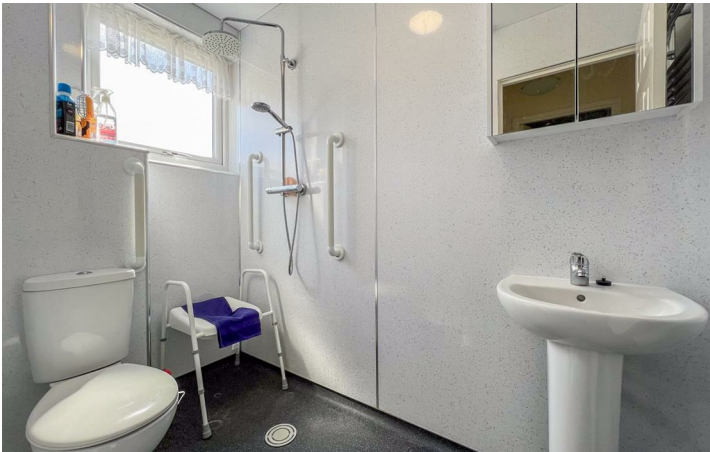
Situated in this quiet cul-de-sac within this popular residential area close to all local amenities, this immaculate two bedroom semi-detached bungalow would make a superb retirement home.

The beautifully present interior has the benefits of full double glazing and gas central heating, a modern cream shaker styled kitchen with built-in appliances, a generous living room with a dining area and a modern fireplace. The property has the superb feature of a sunroom overlooking the rear garden, two bedrooms and a bathroom. There is a driveway leading to a car port offering ample 'off road' parking.

The gardens surrounding the property on three sides have been landscaped for ease of maintenance, featuring gravelled areas to the front and side and the enclosed rear garden has a patio with raised flowerbeds and shrubberies.

Viewing is highly recommended.







Important Information You may download, store and use the material for your own personal use and research. You may not republish, retransmit, redistribute or otherwise make the material available to any party or make the same available on any website, online service or bulletin board of your own or of any other party or make the same available in hard copy or in any other media without the website owner's express prior written consent. The website owner's copyright must remain on all reproductions of material taken from this website.

Berwick Office
36 Hide Hill, Berwick-upon-Tweed
Northumberland, TD15 1AB

T: (01289) 307571
F: (01289) 302948
E: berwick@aitchisons.co

Wooler Office
25 High Street, Wooler
Northumberland, NE71 6BU

T: (01668) 281819
F: (01668) 281717
E: wooler@aitchisons.co



Zoopla.co.uk

